

Right There

Job Pack

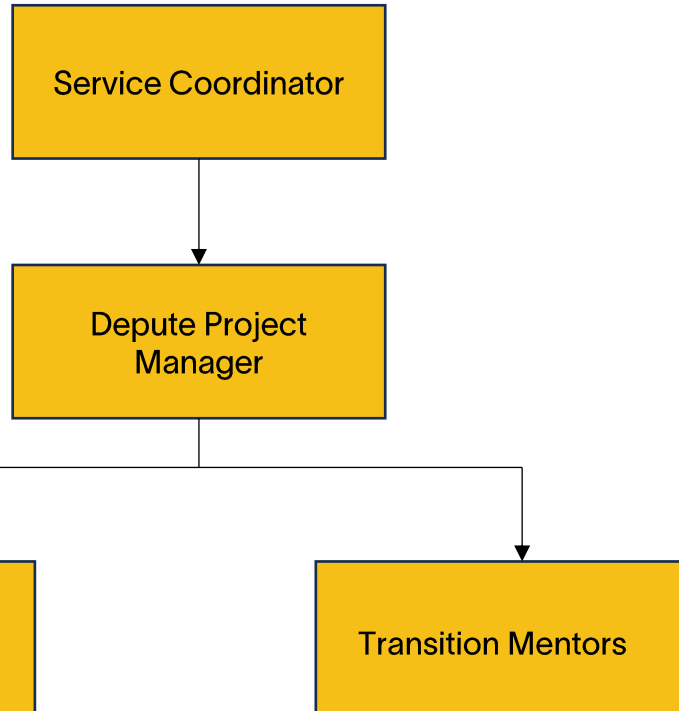
Casual Transition Mentor

(April 2026)

Preventing
homelessness,
one person
at a time

Job Purpose

Casual Transition Mentor



Supported Accommodation South Ayrshire aims to support the local authority's goal of reducing levels of repeat homelessness by providing a high-quality housing support service in Ayr.

The Casual Transition Mentor will support young people aged 16–25 who may be homeless or at risk of becoming homeless.

As the Casual Transition Mentor, you will provide ongoing support and be a positive role model for young people and support them to access opportunities, engage positively within their communities through social activities and inclusion, promote positive social network and encourage engagement with friends and family as appropriate.

Working directly with young people you will gain their trust and support them to engage in learning experiences that promote their educational attainment, self-confidence, independent living skills and resilience.

About Right There



We are Right There, a charity celebrating our 200th anniversary in 2024. We provide tailored support for people, at home, and in the community. We are here for people who are living with the effects of homelessness, poverty, addiction, or family breakdowns. Last year we supported almost 4,000 individuals, helping to prevent them from becoming homeless or separated from the people they love.

We are here to offer the right support at the right time, including breaking down financial barriers; accessing the private rental market; linking up with local health, employment and training services to help people make connections within the community; and, helping people feel happier, safer, and more confident to take steps to improve their own lives.

Every person's story is unique, and everyone's route home is different, so we tailor our response to the individual. We want to challenge stereotypes – it doesn't matter what the situation is – we're not here to judge, only to help.

Our approach is about creating trusting relationships and nurturing people's strengths, and our 200 dedicated staff, mentors and volunteers play a crucial role in this.

Our key areas of focus



For People

We provide tailored support for children and adults to help individuals and families feel happier, create stronger bonds and stay together.



At Home

We provide safe and supportive places to call home for people of all ages, from any circumstances, for as long as they might need it.



In The Community

We provide the tools for people to live independently and build their lives within their community, creating their own safe and secure homes.

Our Vision

A world where everyone has an equal chance to create a safe and supportive place to call home.

Our Mission

We meet people where they are in life with no judgement; walking alongside those who need support, and preventing them becoming homeless or separated from the people they love.

Values

At the heart of Right There is our values. And we are proud to live these every day; to be the best we can be for those involved in our work.

Respect

We treat everyone the same way - with dignity and respect. You'll find no judgement here.

Integrity

We take great pride in having high standards and transparency about our goals and progress as a charity.

Compassion

We understand the importance of empathy, and the power of a shoulder to lean on.

Aspiration

We believe firmly in the goodness in people; their strengths and what makes them unique.

Reflection

We are always learning to be the best we can be.

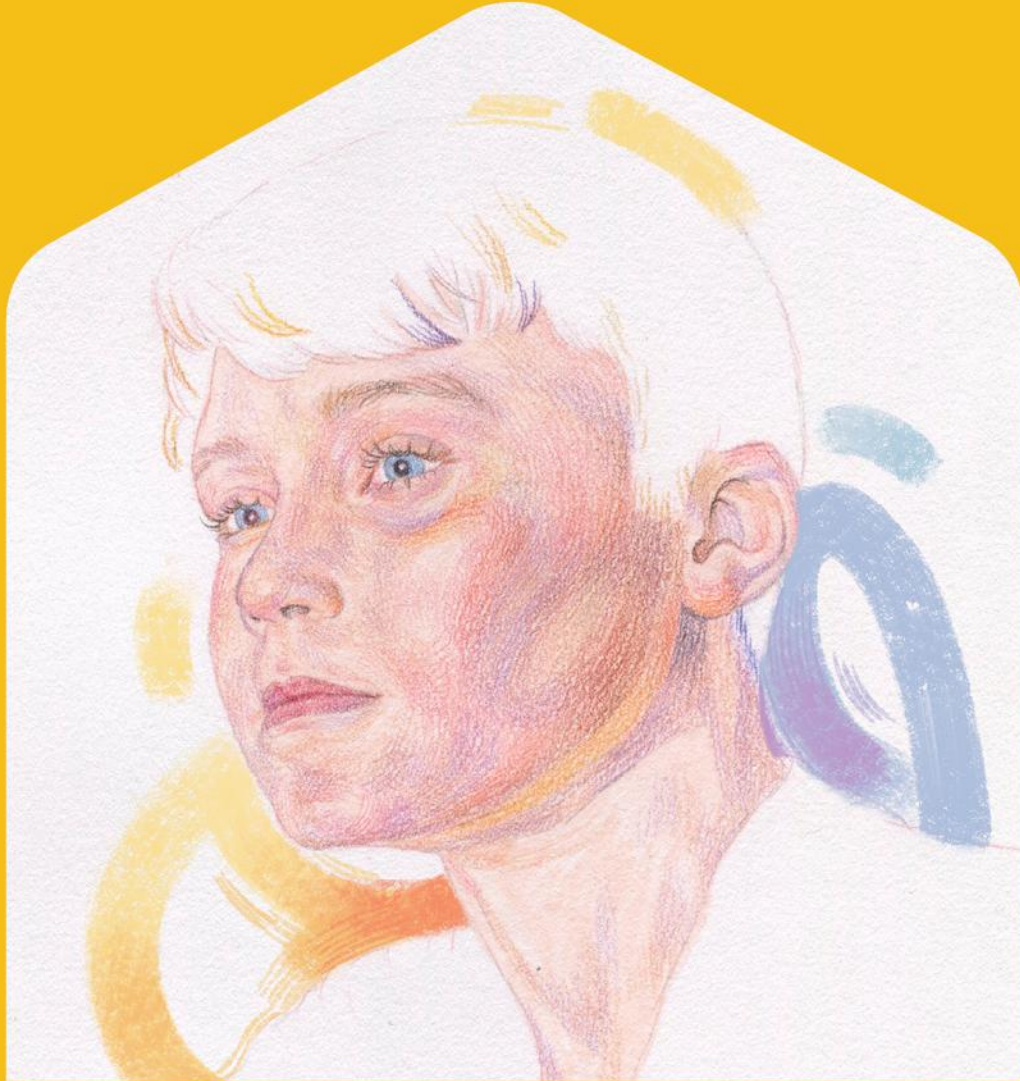
Main Role Responsibilities

- Provide on-going support and act as a positive role model for young people who are involved with the Service.
- Be the key person to support young people to identify, plan and achieve their life goals using a range of person centred and holistic approaches to achieve identified outcomes.
- Support young people to access opportunities to engage positively within their communities through social diversionary activities and inclusion, promote positive social network and encourage engagement with friends and family as appropriate.
- Work directly with young people to gain their trust and to support them to engage in learning experiences that promote their educational attainment, academic qualifications, self confidence, independent living skills and resilience.
- Promote active and responsible citizenship, including being a responsible tenant.
- Monitor and record to a high level of detail and accuracy the assessment and progress of young people supported in the service. Produce and present reports as requested, relating to individual young people's progress.
- Demonstrate high level of engagement skills and utilise creativity and innovation in direct work with young people.
- Contribute to a positive team ethos of on-going practice development and innovation, this includes practice/philosophy and policies of the organisation.
- Lone work in the community effectively and responsibly.
- Have a good level of understanding and empathy regarding issues affecting young people who have experienced adversity and be able to evidence this in day to day practice.
- Have good knowledge on the legislation and best practice guidance relating to looked after and accommodated young people, including roles and responsibilities of Corporate Parenting.
- Use initiative and communication skills effectively when engaging with and advocating for young people.
- Where appropriate and when required, liaise with individuals' family and other social networks in a professional and courteous manner.
- Participate and contribute effectively to multi-agency and collaborative working in a professional and courteous manner.
- Take part in the rota system on a flexible basis as required, manage your working week and allocate your time to provide the most appropriate support to young people.
- Participate in training.
- Work within Right There's professional and administrative policies and practice guidelines.

Role Details

Contract: Casual
Salary: £14.41 per hour
Reporting to: Depute Project Manager

- The hours we offer you will be ad hoc and infrequent. You will work for Right There at times and on days to be agreed between you and Right There.
- Your core place of work will be 42 Chalmers Road, Ayr, KA7 2JQ
- You may be required to work from such other place as the organisation may reasonably require from time to time.
- In accordance with the Working Time Regulations, you are entitled to be paid for annual leave. You are entitled to 6 weeks in a full annual leave year. Payment for annual leave is calculated based on 13.04% of your total pay in a pay period and will be paid in addition to wages accrued for that month. This includes if you leave your position at Right There part way through a pay period.
- Casual Workers are assessed and enrolled into a pension if they meet the auto-enrolment criteria
- It is the nature of the work of Right There that tasks and responsibilities are, in many circumstances unpredictable and varied. All workers are, therefore, expected to work in a flexible way when the occasion arises.



www.rightthere.org
hello@rightthere.org

Follow us search 'Right There':



Thank you.

**Good luck with your
application.**

**For People.
At Home. In the Community.**